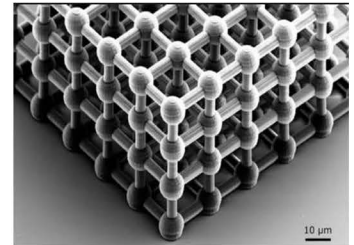
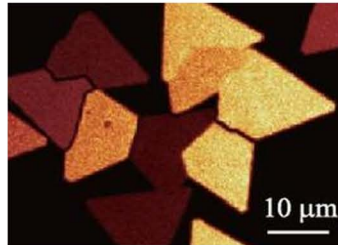


### 1030-1060nm High Power Ultrafast Fiber Laser -Rainbow 10X0 HP

Rainbow 10X0 HP is our new generation of “wavelength versatile” high power fiber laser that features unparalleled output parameters. The laser adopts an innovative new cavity design that allows setting of the central wavelength within 1030-1060 nm. As with other NPI mode-locked products, the Rainbow 10X0 HP laser is produced using our proprietary ‘Smart-Lock’ processes to ensure long-term stability and reliability. It has an average output power exceeding 5 W and a pulse width under 100 fs. A frequency-doubling module can be used to enable W-level 532nm (Green) femtosecond output.



#### Key Features :

- Center wavelength optional
- Pulse width < 100 fs
- Power: 5-10 W
- Integrated design

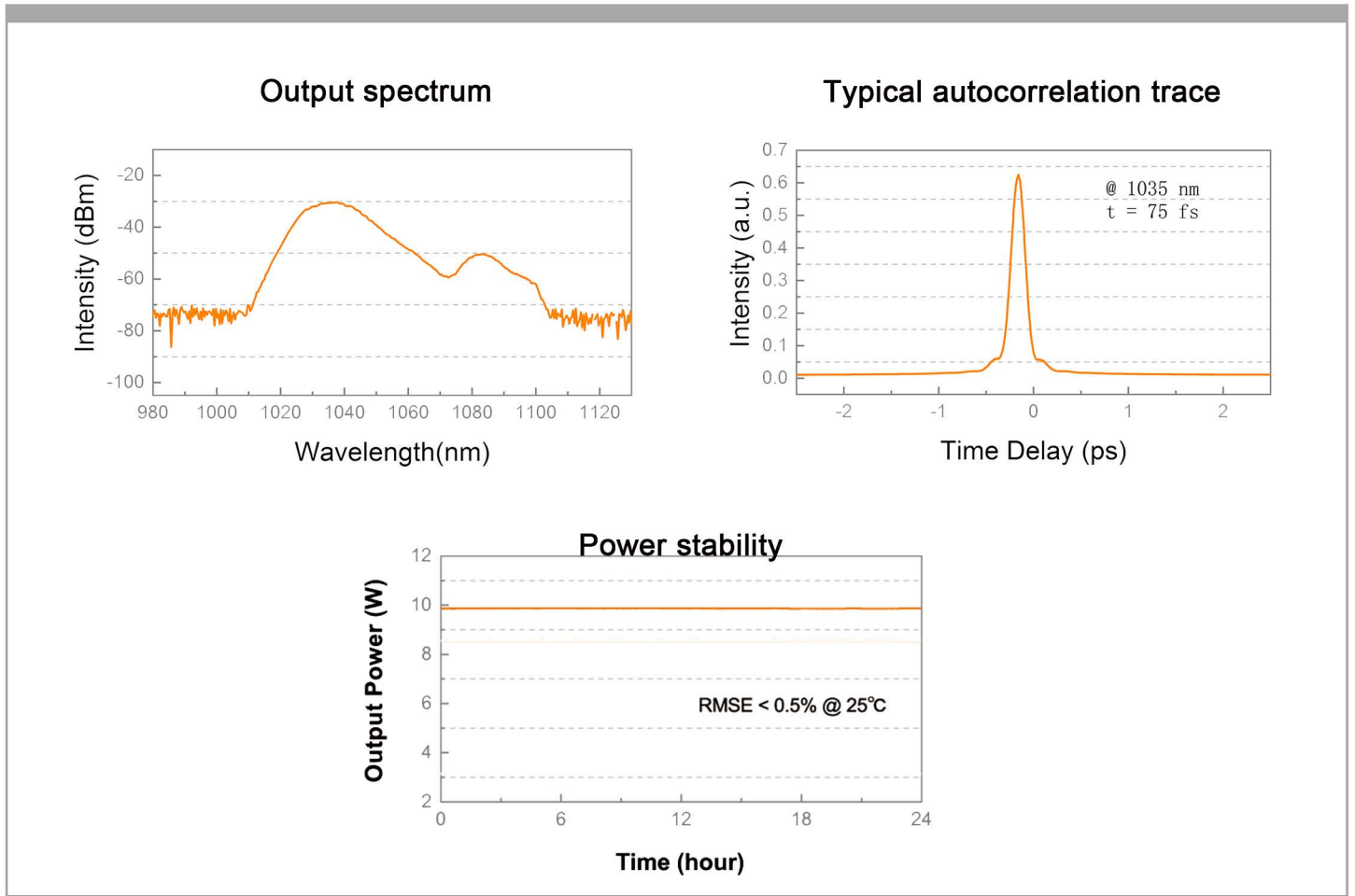
#### Applications :

- Harmonic imaging
- Two-photon polymerization
- Two-photon imaging
- Quantum communication

### » Main Specification:

Laser Parameters		
Operating Wavelength	nm	1030/1040/1050/1060
Pulse Width (FWHM)	fs	<100
Repetition Rate	MHz	80
Average Power	W	5-10
Average Power Stability	% RMS	<0.5 (24h@25°C)
Single Pulse Energy	nJ	>60
Polarization Extinction Ratio	dB	>20
Beam Quality		TEM00, M <sup>2</sup> <1.2
Output Mode		Free-space /Shutter
Electrical, Environmental and Mechanical Parameters		
Trigger Signal	V	1 V @50 Ohm
Power Consumption	Watt	<150
Supply Voltage	VAC	100-240 (50Hz/60Hz)
Operational Temperature Range	°C	10-45
Operational Humidity Range	%	20~80 ( Non-condensing )
Storage Temperature Range	°C	0-50
Storage Humidity Range	%	20~80 ( Non-condensing )
Weight Laser Head	kg	10
Dimensions Laser Head	mm(L×W×H)	445×300×134
Weight supply unit	kg	10
Dimensions supply unit	mm(L×W×H)	380×445×94
Cooling		Air-cooled

### Test Data :



### Machine Drawing

