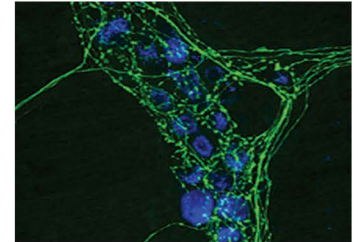
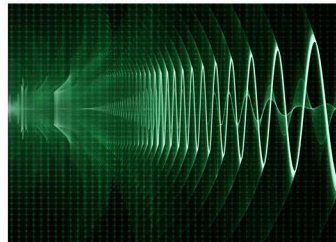


1.5 μm Ultrafast Fiber Laser - Rainbow 1550

Rainbow 1550 Pro is an Er-fiber based high-performance ultrafast fiber laser specifically designed for scientific users and has flexible parameters upon user requests. The laser has an operating wavelength of $1560\pm 10\text{nm}$, pulse width of $\leq 80\text{fs}$, repetition rate of 80MHz and an average power up to 200mW.

Rainbow 1550 Pro is based on SESAM passive locking technology and has an all-PM fiber structure. It uses NPI Lasers' proprietary optical switch packaging technology, and integrates NPI Lasers' unique "Smart-Lock" processes to ensure long-term stability and reliability. The laser is an easy-to-use turn-key system, and can also be computer controlled. As a newest feature, the repetition rate of Rainbow 1550 Pro can be locked to an ultra-stable frequency reference to achieve a repetition rate deviation as small as $<10\text{mHz}$ (the "LOCK" option).



Key Features :

- Customizable wavelength
- Ps/Fs level
- Linearly polarization
- Diffraction limited beam

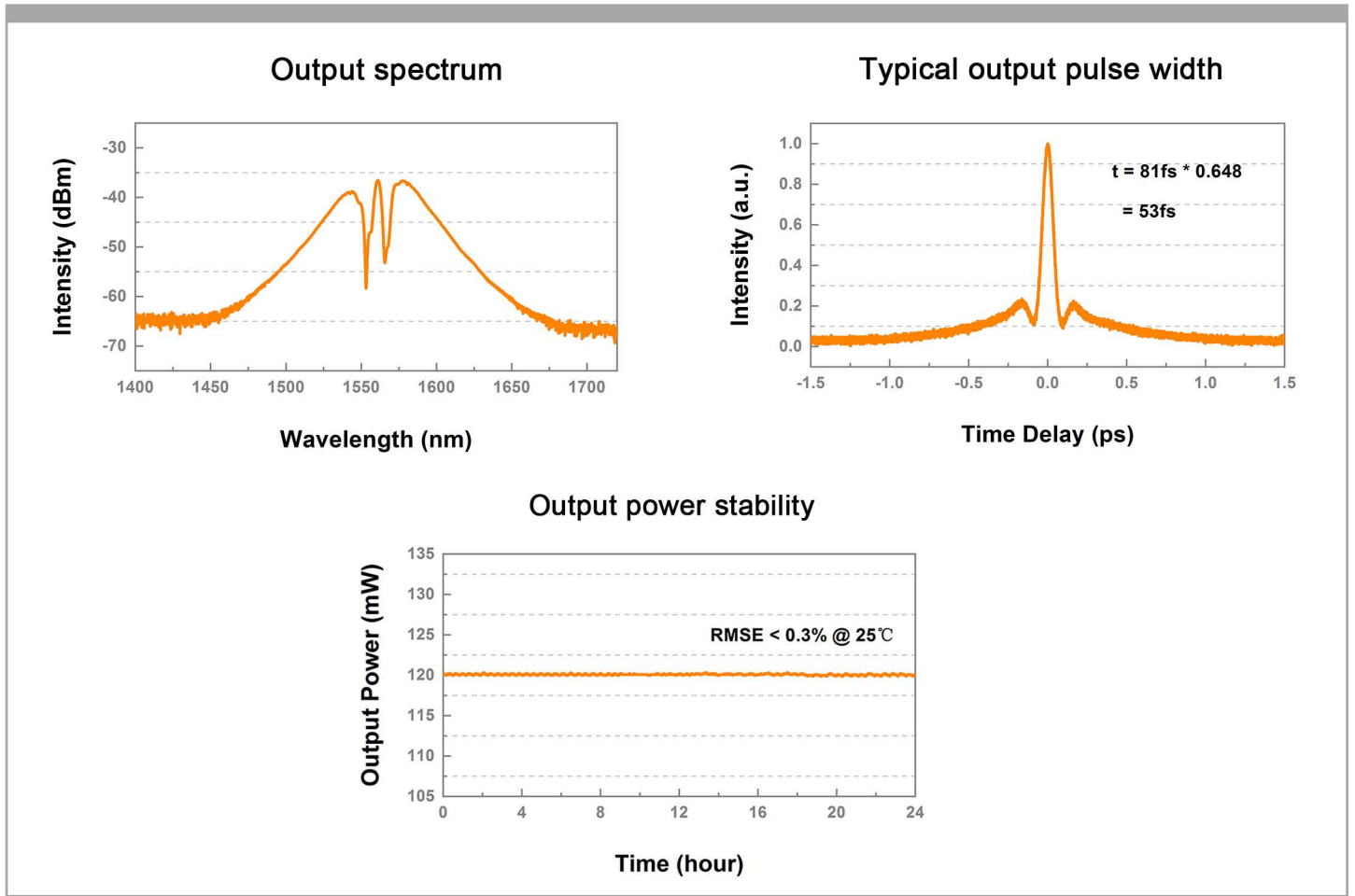
Applications :

- Terahertz generation
- Precision measurement
- Two-photon polymerization
- Two-photon imaging

» Main Specification:

Laser Parameters		
Operating Wavelength	nm	1560±10
Pulse Width (FWHM)	fs	<80
Repetition Rate	MHz	80
Average Power	mW	>200
Average Power Stability	% RMS	<0.1 (24h@25°C)
Single Pulse Energy	nJ	>1.25
Polarization Extinction Ratio	dB	>20
Beam Quality		TEM00, M²<1.2
Output Mode		PM1550 Fiber,FC/APC Connector
Electrical, Environmental and Mechanical Parameters		
Trigger Signal	V	1 V @50 Ohm
Power Consumption	Watt	<150
Supply Voltage	VAC	100-240 (50Hz/60Hz)
Operational Temperature Range	°C	10-45
Operational Humidity Range	%	20~80 (Non-condensing)
Storage Temperature Range	°C	0-50
Storage Humidity Range	%	20~80 (Non-condensing)
Weight Laser Head	kg	17
Dimensions Laser Head	mm(L×W×H)	387×298×115
Cooling		Air-cooled

» Test Data :



» Machine Drawing

