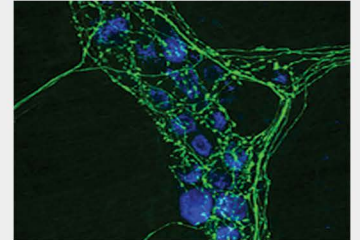
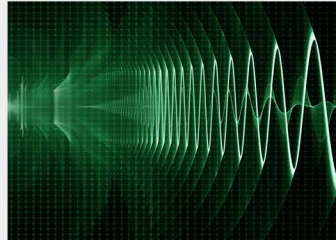


780 nm Ultrafast Fiber Laser - Rainbow 780 OEM

Rainbow 780 OEM is a natural extension of Rainbow 1550 OEM. The laser is coupled with an internal double-frequency module to generate 780nm ultrafast laser beam. The laser is highly integrated and is specially developed as a standard module with a compact size for easy integration with industrial or commercial OEM systems.

Rainbow 780 OEM is ideal for scientific platform construction such as THz-TDS (time-domain terahertz generation), SHG/THG imaging and multi-photon imaging. It can meet a broad range of R&D requirements of the scientific community.



Key Features :

- Customizable wavelength
- High peak powerl
- Linearly polarization
- Diffraction limited beam

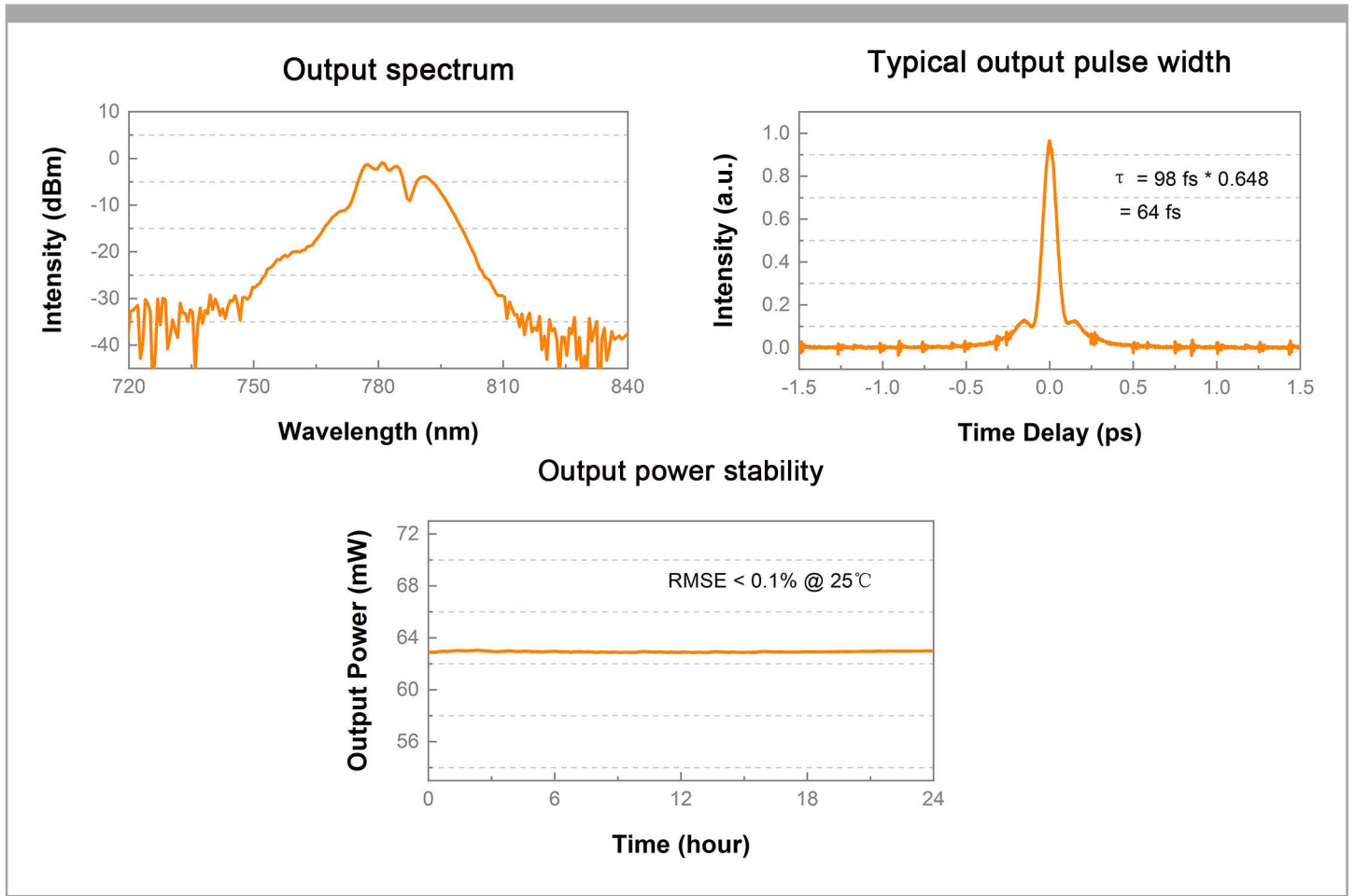
Applications :

- Terahertz radiation
- Biophotonology
- Dual photon imaging
- Optical measurements

» Main Specification:

Laser Parameters		
Operating Wavelength	nm	780±10
Pulse Width (FWHM)	fs	<80
Repetition Rate	MHz	80
Average Power	mW	>60 or >80
Average Power Stability	% RMS	<0.1 (24h@25°C)
Single Pulse Energy	nJ	>0.75
Polarization Extinction Ratio	dB	>20
Beam Quality		TEM00, M ² <1.2
Output Mode		Free-space /Shutter
Electrical, Environmental and Mechanical Parameters		
Trigger Signal	V	1 V @50 Ohm
Power Consumption	Watt	<150
Supply Voltage	VDC	12
Operational Temperature Range	°C	10-45
Operational Humidity Range	%	20~80 (non-condensing)
Storage Temperature Range	°C	0-50
Storage Humidity Range	%	20~80 (non-condensing)
Weight Laser Head	kg	2
Dimensions Laser Head	mm(L×W×H)	200×140×85
Cooling		Air-cooled

Test Data :



Machine Drawing

