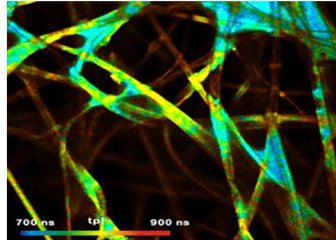


### High-power Yd-doped Fiber Amplifier - YDFA HP

YDFA HP is NPI Laser's benchtop High-power Yb-doped fiber amplifier. It has built-in in the unit a high-power, high-performance multi-mode pump diode, a highly stable WDM (combiner), and high-gain Yb-doped fiber. YDFA is a high reliability, high power output, high gain and low noise laser product, and is an ideal choice for high-power YDFA systems.



#### Key Features :

- Wide gain bandwidth
- High signal-to-noise ratio
- Excellent Power Stability
- High power output

#### Applications :

- Pump-probe
- Laser ranging
- Time-resolved fluorescence
- Supercontinuum generation

### » Main Specification:

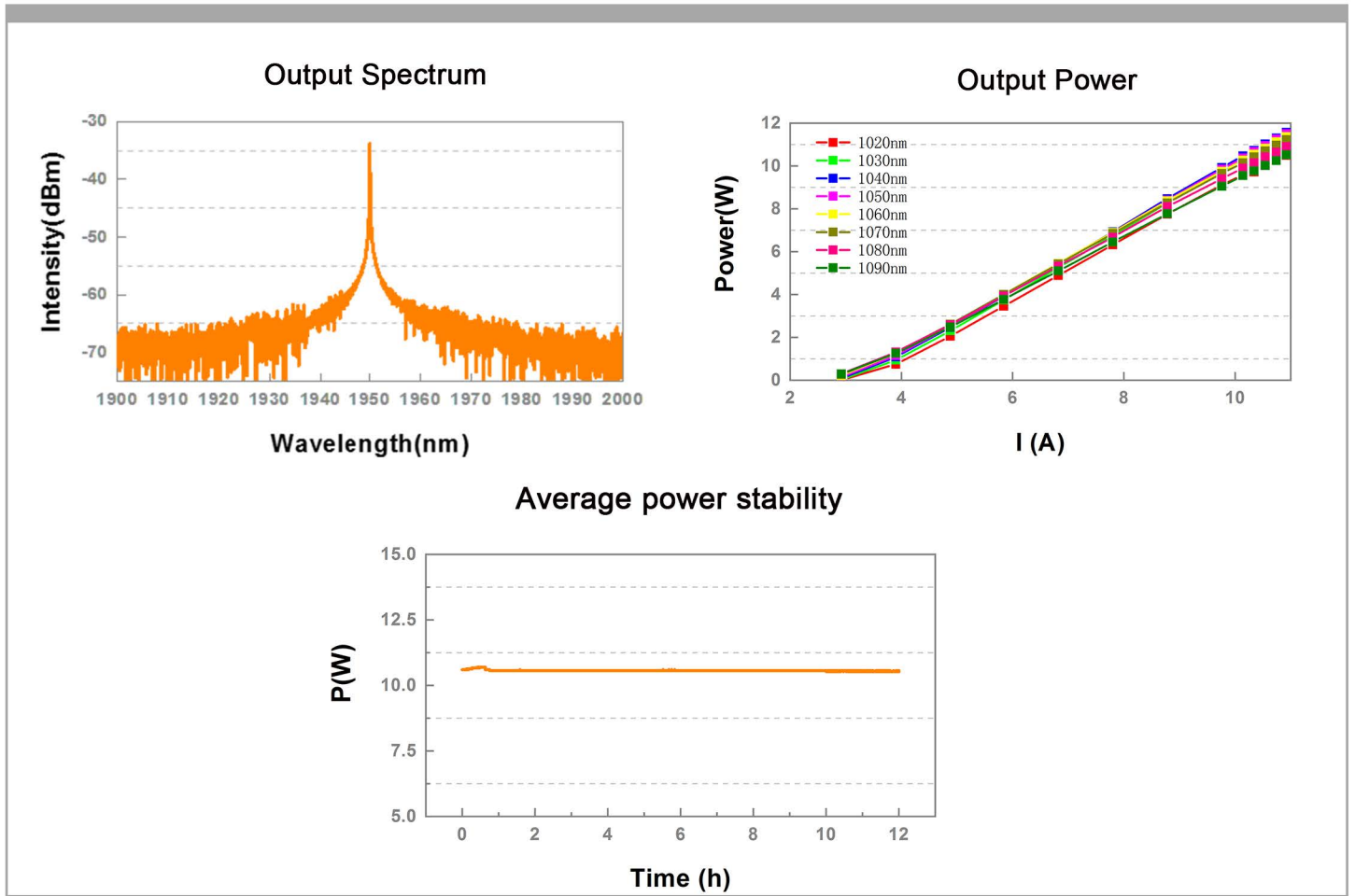
#### Laser Parameters

Operating Wavelength	nm	1018±1
Average Power	W	>10
Average Power Stability	% RMS	<0.8 (12h@25°C)
Beam Diameter	mm	2±0.5
Beam Divergence	mrad	<1
Polarization Extinction Ratio	dB	>15
SNR of Spectrum	dB	>20
Beam Quality		TME00,M²<1.2
Output Type		Collimated Beam

#### Electrical, Environmental and Mechanical Parameters

Supply Voltage	VAC	100-230
Operational Temperature Range	°C	15~35
Operational Humidity Range	%	20~80 ( non-condensing )
Storage Temperature Range	°C	-20~+50
Storage Humidity Range	%	20~80 ( non-condensing )
Weight Laser Head	kg	4.6
Dimensions Laser Head	mm(L×W×H)	306×276×111.6
Cooling		Air-cooled

### Test Data :



### Machine Drawing

