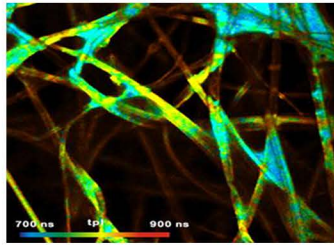


### 1 $\mu$ m Ultrafast Fiber Laser Seed - Blade Seed I fs

Blade series 1 $\mu$ m femtosecond mode-locked fiber seed laser is developed and manufactured solely by NPI Lasers. The seed has pulse width of  $\leq 10$ ps (compressable to 300 fs) repetition rate 20-40MHz and average power  $>50$ mW.

Blade series 1 $\mu$ m femtosecond mode-locked fiber seed laser is designed for SSL picosecond laser power amplification. It is suitable for any round-the-clock industrial use cases and other commercial applications.



#### Key Features :

- 24/7 high reliable operation
- 10k times mode-locked test
- HASS test
- Flexible, customized design

#### Applications :

- Ultrafast laser seed
- Time-resolved fluorescence
- Laser ranging
- Supercontinuum generation

### » Main Specification:

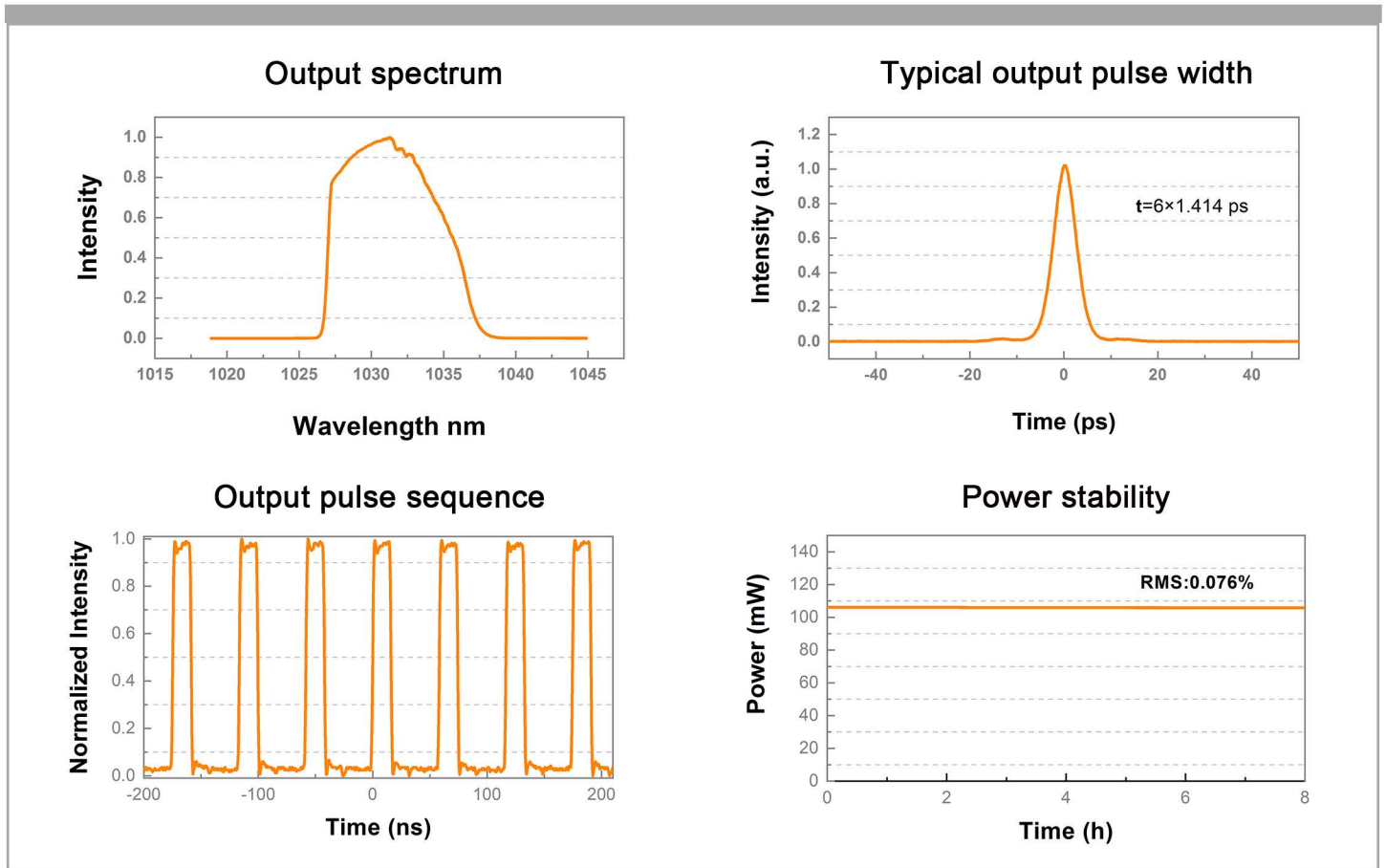
#### Laser Parameters

Operating Wavelength	nm	1030-1045
Spectral Width	nm	5-10
Repetition Rate	MHz	20-40
Average Power	mW	$>50$
Pulse width (FWHM)	fs	$<10$ ps (Compressable to 300 fs)
Average Power Stability	% RMS	$<0.5$ (12h@25°C)
Polarization Extinction Ratio	dB	$>20$
Output Fiber		SM PM Fiber
Fiber Connector		PM980 Fiber with FC/APC Connector

#### Electrical, Environmental and Mechanical Parameters

Supply Voltage	VDC	12
Operational Temperature Range	°C	15~35
Operational Humidity Range	%	20~80 ( Non-condensing )
Storage Temperature Range	°C	-20~+50
Storage Humidity Range	%	20~80 ( Non-condensing )
Weight Laser Head	kg	1.2
Dimensions	mm(L×W×H)	185×127×50
Cooling		Air-cooled

### Test Data :



### Machine Drawing

