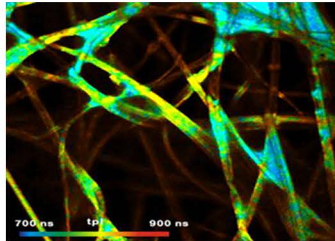


1 μ m Ultrafast Fiber Laser Seed - Blade Seed I ps

Blade series 1 μ m picosecond mode-locked fiber seed laser is developed and manufactured solely by NPI Lasers. The seed has pulse width of ≤ 10 ps, repetition rate selectable between 30MHz, and average power >75 mW.

Blade series 1 μ m picosecond mode-locked fiber seed laser is designed for SSL picosecond laser power amplification. It is suitable for any round-the-clock industrial use cases and other commercial applications.



Key Features :

- 24/7 high reliable operation
- 10k times mode-locked test
- HASS test
- Flexible, customized design

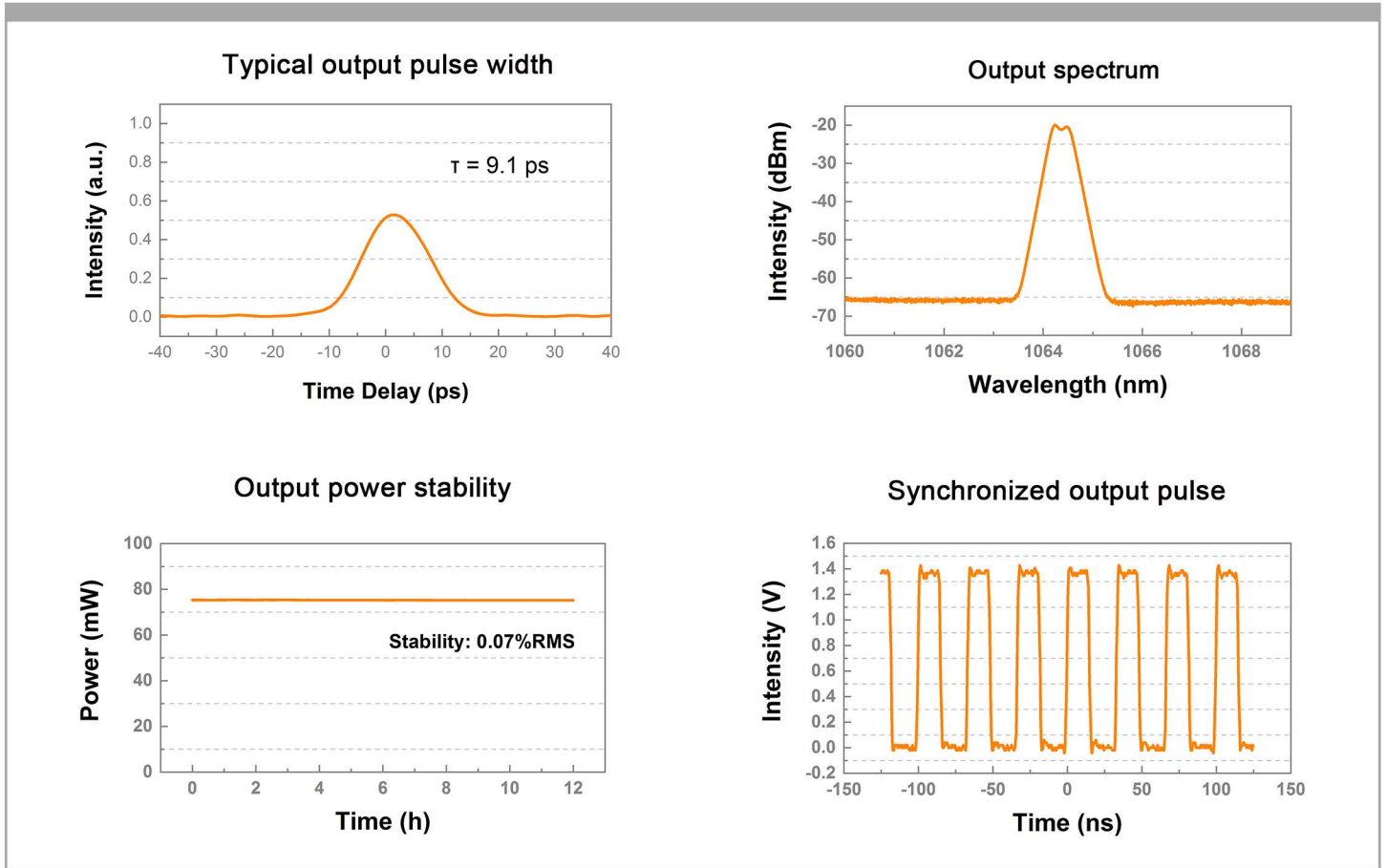
Applications :

- Ultrafast laser seed
- Time-resolved fluorescence
- Laser ranging
- Supercontinuum generation

» Main Specification:

Laser Parameters		
Operating Wavelength	nm	1064.3 \pm 0.15
Spectral Width	nm	<0.5
Repetition Rate	MHz	30
Average Power	mW	>75
Pulse width (FWHM)	ps	<10
Average Power Stability	% RMS	<0.5 (24h@25 $^{\circ}$ C)
Polarization Extinction Ratio	dB	>20
Output Fiber		SM PM Fiber
Fiber Connector		FC/APC FC/APC narrow key pigtail
Electrical, Environmental and Mechanical Parameters		
Supply Voltage	VDC	12
Operational Temperature Range	$^{\circ}$ C	15~35
Operational Humidity Range	%	20~80 (Non-condensing)
Storage Temperature Range	$^{\circ}$ C	-20~+50
Storage Humidity Range	%	20~80 (Non-condensing)
Weight Laser Head	kg	1.2
Dimensions	mm(L \times W \times H)	185 \times 127 \times 50
Cooling		Air-cooled

Test Data :



Machine Drawing

