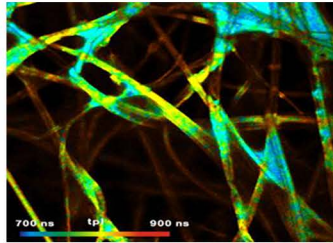


Yd-doped Fiber Amplifier - YDFA

YDFA is a benchtop Yb-doped fiber amplifier. It incorporates high-end multi-mode pump diodes, WDM combiners, and high-gain Yb-doped fiber. The system has industrial-leading power level and noise performance.

Our YDFAs feature a turn-key design. The operator panel has an alarm and status indicators, and integrates RS232 connector (or Ethernet interface) for PC remote control. There are customization options for single-frequency, all-polarization-maintaining and short-pulsed operation.



Key Features :

- Wide gain bandwidth
- High signal-to-noise ratio
- Excellent Power Stability
- High power output

Applications :

- Pump-probe
- Laser ranging
- Time-resolved fluorescence
- Supercontinuum generation

» Main Specification:

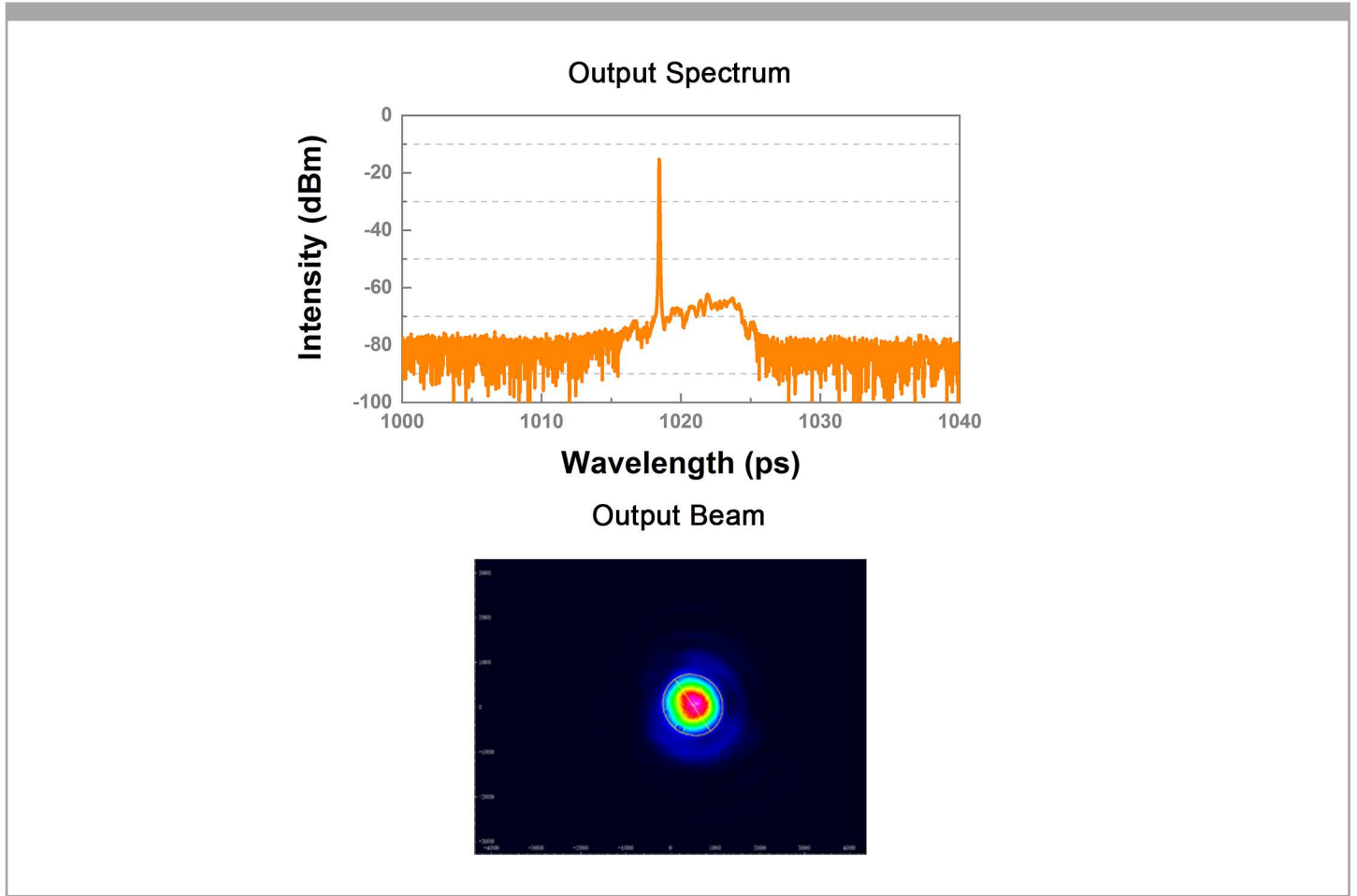
Laser Parameters

Operating Wavelength	nm	1015-1090
Input Power	mW	>10
Average Power	W	1,10
Gain Peak Wavelength	nm	1064
Optical Noise Coefficient	dB	<8
Output Polarization		Random/Linear Polarization
Output Type		Output Collimator (>1W)

Electrical, Environmental and Mechanical Parameters

Power Consumption	Watt	<40
Supply Voltage	VAC	100-240 (50Hz/60Hz)
Operational Temperature Range	°C	15~35
Operational Humidity Range	%	20~80 (Non-condensing)
Storage Temperature Range	°C	-20~+50
Storage Humidity Range	%	20~80 (Non-condensing)
Weight Laser Head	kg	4.6
Dimensions Laser Head	mm(L×W×H)	336×284×113
Cooling		Air-cooled

Test Data :



Machine Drawing

