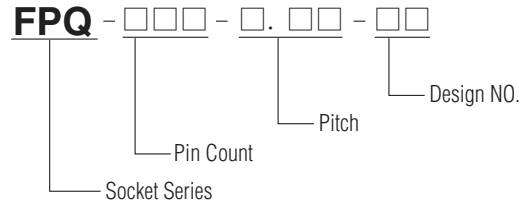


CERAMIC BRACED



● "High-Density" Cerquad Flatpack Family.

ORDERING PROCEDURE



SPECIFICATIONS

Contact resistance: Initial 50mΩ (At 10 mA)
 Maximum voltage: AC700V RMS (for 1 minute)
 Insulation resistance: 1,000MΩ or higher (At DC 500V)
 Rated current: 1A
 Operating temperature range: -65°C~+150°C
 Terminal strength against pulling: 0.5kg (1 min)
 Insertion: Min. 10,000 times (mechanical)

MATERIAL

Body: PEI
 Contact: BeCu, Au plating (Ni-base)

FAMILY OF CQFP 75mm WITH NON-CONDUCTIVE TIE BAR

Unit: mm (in.)

PART NO.	PIN COUNT	PITCH	CERAMIC BODY SIZE
FPQ-224(352)-0.5-01	224	0.5(19.6mil)	32(1.25)
FPQ-240(352)-0.5-01	240	0.5(19.6mil)	36(1.41)
FPQ-256(352)-0.5-01	256	0.5(19.6mil)	36(1.41)
FPQ-288(352)-0.5-01	288	0.5(19.6mil)	40(1.57)
FPQ-320(352)-0.5-01	320	0.5(19.6mil)	44(1.73)
FPQ-352-0.5-01	352	0.5(19.6mil)	48(1.88)

LDCC

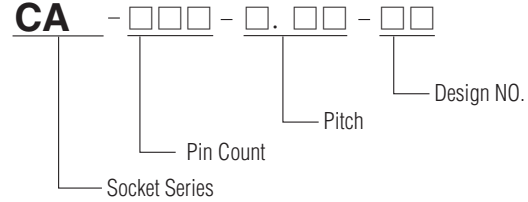
LEADED CERAMIC CHIP CARRIER



- Designed for maximum device lead protection.
- Live and dead bug available.

ORDERING PROCEDURE

FPQ
CA



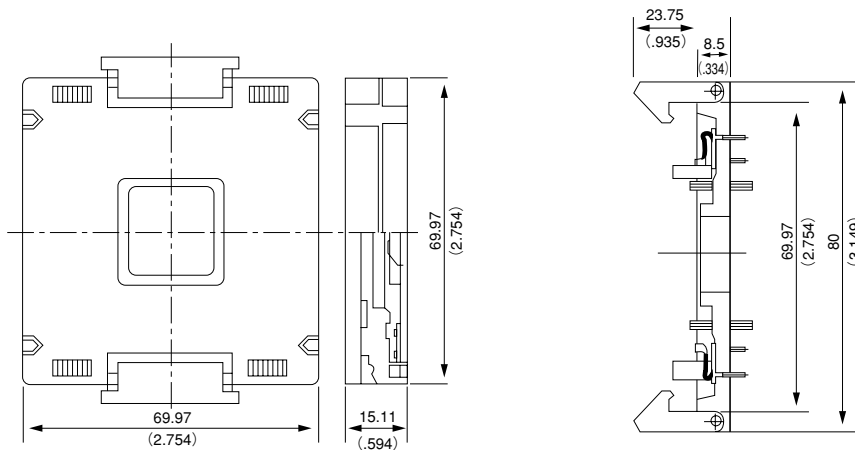
SPECIFICATIONS

- Contact resistance: Initial 30mΩ (At 10 mA)
- Maximum voltage: AC700V RMS (for 1 minute)
(Below 0.5mm Pitch)
(AC500V RMS (for 1minute))
- Insulation resistance: 1,000 MΩ or higher (At DC 500V)
- Rated current: 1A
- Operating temperature range: -65°C ~ +150°C
- Terminal strength against pulling: 0.5Kg (1 min)
- Insertion: Min. 10,000 times (mechanical)

MATERIAL

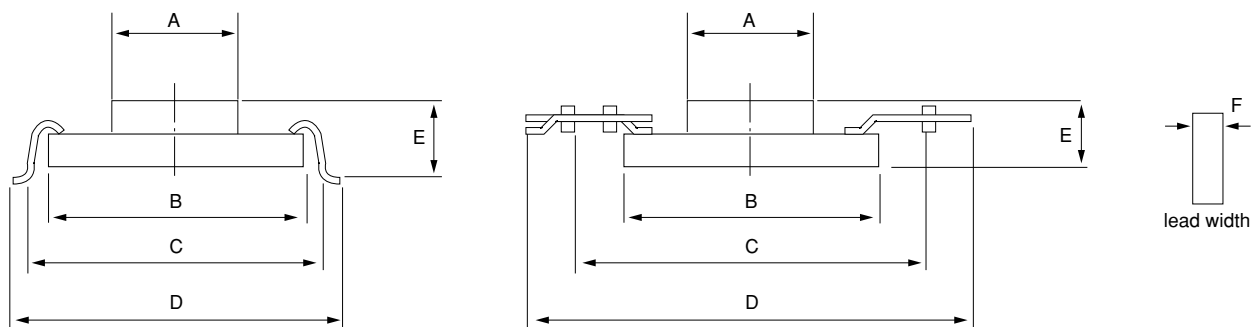
- Body: PEI
- Contact: BeCu, Au plating (Ni-base)

SOCKET DIMENSIONS



Applicable IC/LDCC SOCKET & CARRIER

APPLICABLE DIMENSIONS



Unit: mm (in.)

SOCKET PART NO.	CARRIER PART NO.	LEAD FORM	LOADING DIRECTION	PIN COUNT	PITCH	APPLICABLE IC DIMENSIONS (REF.)					
						A	B	C	D	E	F
FPQ-104-0.8-01	CA-104-0.8-01	FLAT LEAD	DEAD BUG	104	0.8 (31.5mil)	—	□23.8 (0.937)	□35.5 (1.397)	□42.5 (1.673)	max2.87 (0.112)	0.305 (0.012)
FPQ-132-0.635-01	CA-132-0.635-01	FLAT LEAD	DEAD BUG	132	0.635 (25mil)	□19.76 (0.777)	□24.13 (0.959)	□34.798 (1.370)	□39.37 (1.550)	max3.6 (0.141)	0.203 (0.008)
	CA-132-0.635-01	GULL WING	DEAD BUG	132	0.635 (25mil)	□19.76 (0.777)	□24.13 (0.950)	□27.178 (1.070)	□29.21 (1.150)	max3.32 (0.130)	0.203 (0.008)
	CA-132-0.635-02	FLAT LEAD	LIVE BUG	132	0.635 (25mil)	□19.76 (0.777)	□24.13 (0.950)	□34.798 (1.370)	□39.37 (1.550)	max3.6 (0.141)	0.203 (0.008)
FPQ-144-0.635-01	CA-144-0.635-01	FLAT LEAD	DEAD BUG	144	0.635 (25mil)	□24.38 (0.959)	□26.67 (1.050)	□39.878 (1.570)	□44.75 (1.761)	max3.94 (0.115)	0.203 (0.008)
FPQ-164-0.635-01	CA-164-0.635-01	FLAT LEAD	DEAD BUG	164	0.635 (25mil)	□21.844 (0.860)	□29.21 (1.150)	—	□44.45 (1.750)	max3.09 (0.121)	0.203 (0.008)
FPQ-196-0.635-01	CA-196-0.635-01	FLAT LEAD	DEAD BUG	196	0.635 (25mil)	□24.38 (0.959)	□34.29 (1.350)	□44.704 (1.760)	□49.276 (1.940)	max4 (0.157)	0.203 (0.008)
	CA-196-0.635-01	GULL WING	LIVE BUG	196	0.635 (25mil)	□24.38 (0.959)	□34.29 (1.350)	□37.338 (1.470)	□39.37 (1.550)	max3.6 (0.141)	0.305 (0.012)
	CA-196-0.635-02	GULL WING	DEAD BUG	196	0.635 (25mil)	□19.05 (0.750)	□34.29 (1.350)	□40.386 (1.590)	□42.164 (1.660)	max5.21 (0.205)	0.305 (0.012)
	CA-196-0.635-03	FLAT LEAD	LIVE BUG	196	0.635 (25mil)	□24.38 (0.959)	□34.29 (1.350)	□44.704 (1.760)	□49.276 (1.940)	max4 (0.157)	0.203 (0.008)
FPQ-224-0.635-01	CA-224-0.635-04	FLAT LEAD	DEAD BUG	224	0.635 (25mil)	□24.38 (0.959)	□38.735 (1.525)	□52.07 (2.050)	□56.515 (2.225)	max4.37 (0.172)	0.203 (0.008)
	CA-224-0.635-03	FLAT LEAD	LIVE BUG	224	0.635 (25mil)	□24.38 (0.959)	□38.735 (1.525)	□52.07 (2.050)	□56.515 (2.225)	max2 (0.078)	0.203 (0.008)
FPQ-256-0.508-01	CA-256-0.508-01	FLAT LEAD	DEAD BUG	256	0.508 (20mil)	□24.638 (0.970)	□37.084 (1.460)	□51.816 (2.040)	□56.388 (2.220)	max4.42 (0.174)	0.203 (0.008)

