

PSS/VIPER™

Power System Simulator for Visual Power Engineering

Software for Network Analysis of Marine, Industrial, and Small Utility Systems

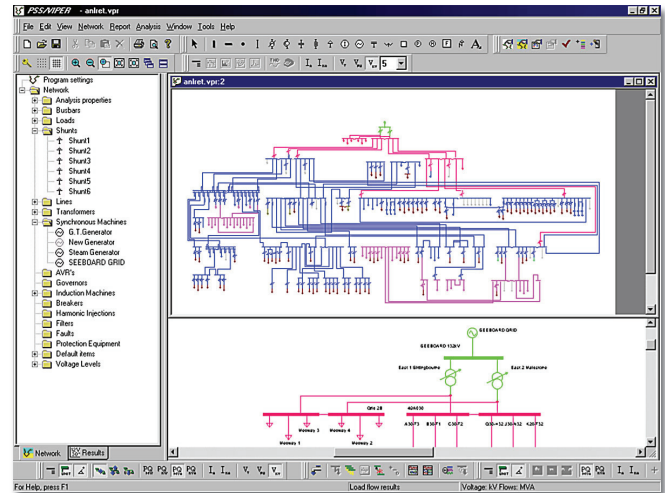
Power System Simulator for Visual Power Engineering (PSS/VIPER™) is a power systems analysis tool that combines exceptional ease of use with the latest techniques and standards in both electrical power engineering and software design.

Ideal for Marine, Industrial, Small Utility Power Systems

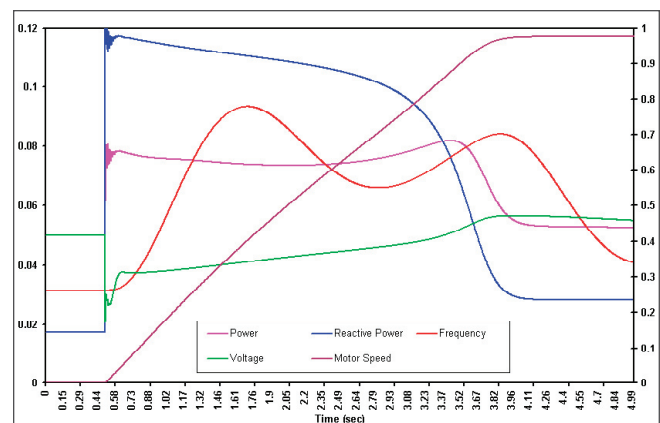
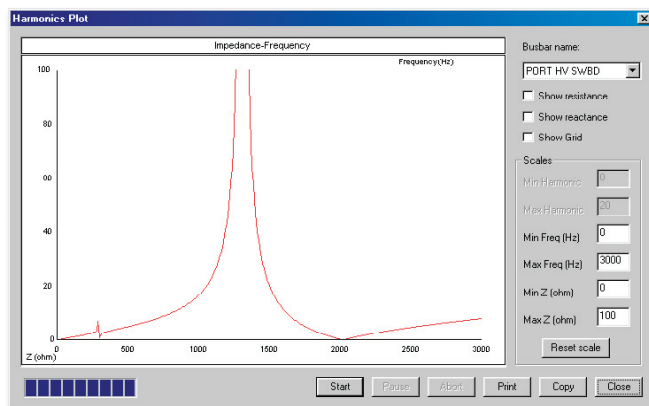
PSS/VIPER™ is ideal for those who want to perform comprehensive power system analyses on balanced AC power systems where the full capabilities of larger, more complicated, and more expensive programs are not required. It is well suited to handle diverse applications, including marine (ships, submarines, oil rigs, floating oil exploration platforms), industrial (mines, paper mills, petrochemical facilities, cogeneration plants), and smaller utility networks.

Outstanding Features Offered by PSS/VIPER™ Include:

- Load flow, fault-level analysis, harmonics, protection, and coordination
- Dynamic simulation (to (Power System Simulator for Engineering PSS/E™ Standard)
- Integration with PSS/E and other Shaw Power Technologies, Inc. (Shaw PTI) products



- Has the ability to read ASCII-formatted network files from other analysis tools
- Fully interactive network diagram with cut/paste functions
- Network size is only limited by computer resources
- Short-circuit analysis embodies the concept of G74, IEC363, and IEC909 standards
- Data dictionary of typical models from Microsoft® Access™ or any other Open DataBase Connectivity (ODBC) source
- Full network import from ODBC sources
- Fully supported worldwide
- Reporting in Microsoft Excel spreadsheet format
- Cut and paste results/diagrams into Microsoft Word





PSS/VIPER™ now incorporates the very latest licensing technology allowing users to download from the Internet and install it on their machines with codes from PTI—no more waiting.

Contact Shaw PTI for today for your copy of PSS/VIPER™:

Contact: Distribution Product Sales
Shaw Power Technologies, Inc.
1482 Erie Boulevard
P.O. Box 1058
Schenectady, NY 12301-1058
Telephone: 518-395-5000
Fax: 518-346-2777
Email: software.solutions@shawgrp.com

SHAW POWER TECHNOLOGIES, INC. WORLDWIDE CONTACTS

USA

1482 Erie Boulevard, P.O. Box 1058
Schenectady, NY 12301-1058 USA
+ 1 518 395 5000

Europe

Cranford Court, King Street
Knutsford, Cheshire WA16 8BW UK
+44 (0) 1565 650388

Asia

13G, Worldwide Business Centre,
Block 1 Jalan Tinju 13/50
40675 Sham Alam, Selangor Malaysia
+6 03 5511 4800

Visit our website: www.pti-us.com