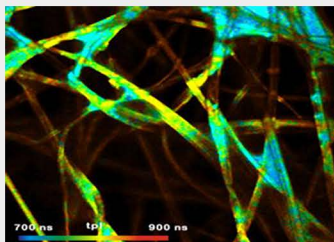


1 μ m Ultrafast Fiber Laser - Rainbow 1064

Rainbow 1064 Pro is a Yb-fiber based high-performance ultrafast fiber laser specifically designed for scientific users and has flexible parameters upon user requests. The laser has pulse width of ≤ 15 ps, repetition rate range between 20~50MHz and an average power up to 1W. The operating wavelength can be customized in the range of 1030~1064 nm.

Rainbow 1064 Pro is based on SESAM passive locking technology and has an all-PM fiber structure. It uses NPI Lasers' proprietary optical switch packaging technology, and integrates NPI Lasers' unique "Smart-Lock" processes to ensure long-term stability and reliability. The laser is an easy-to-use turn-key system, and can also be computer controlled.



Key Features :

- Customizable wavelength
- Picosecond level
- Linearly polarization
- Diffraction limited beam

Applications :

- Pump-probe
- Laser ranging
- Time-resolved fluorescence
- Supercontinuum generation

» Main Specification:

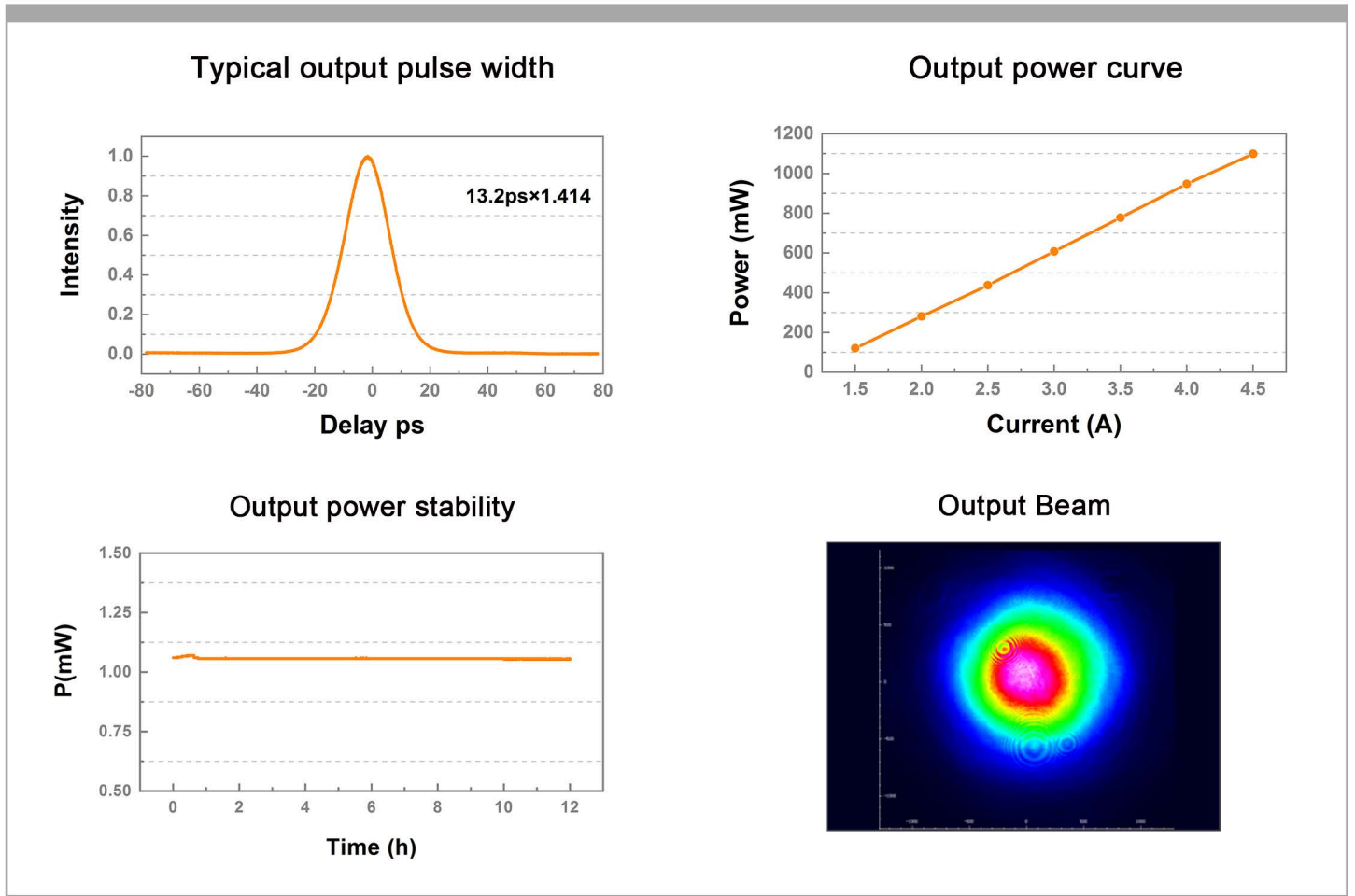
Laser Parameters

Operating Wavelength	nm	1030-1064
Pulse Width (FWHM)	ps	<15
Repetition Rate	MHz	20-50
Average Power	W	>1
Spectrum Width	nm	<1.5
Average Power Stability	% RMS	<0.5 (12h@25°C)
Polarization Extinction Ratio	dB	>20
Beam Quality		M ² <1.1
Output Fiber		Collimator , Beam Diameter < 2mm

Electrical, Environmental and Mechanical Parameters

Supply Voltage	VAC	100-240 (50Hz/60Hz)
Operational Temperature Range	°C	15~35
Operational Humidity Range	%	20~80 (Non-condensing)
Storage Temperature Range	°C	-20~+50
Storage Humidity Range	%	20~80 (Non-condensing)
Weight Laser Head	kg	17
Dimensions Laser Head	mm(L×W×H)	390×297×115
Cooling		Air-cooled

Test Data :



Machine Drawing

